

e-z Theory: Da capo, dal segno and coda



Back to the beginning

Apart from repeat marks and first- and second-time brackets, there are some other symbols that tell us to go to different places in the music.

D.C.

The **Da capo** sign. **Da capo** is Italian and it means *from the top...* It tells us to return to the beginning of the music.

D.S.

The **Dal segno** sign.

This is used to tell the musician to go back in the music to the place where the **segno** sign is found (see below).



The **segno** sign. When we see this in the music, we know that we are going to have to come back to it when we see the **Dal segno** sign (see above).



The **coda** sign. Quite often we see this twice in a piece of music. It tells us, when we repeat the music, where we jump from and where we jump to. This is where the **coda** begins.

Often, we will see in music:

D.C. al coda.

This means that we go back to the beginning until we see the coda sign. Then we jump forward to where it is found a second time.

What do you think **D.S. al coda** means?



Help me! I am a struggling composer!

On the next page, we want you to read very carefully what our struggling composer needs to do, and then write into the score the correct sign.

This can be a little complicated, but once you have played music using these signs a few times, you will find them much easier.



In this melody:

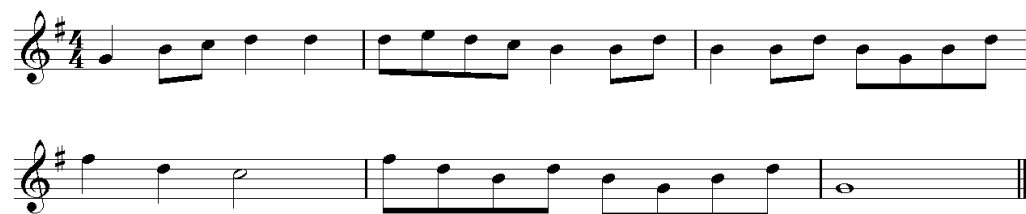
1. "I want the musician to play the first four bars."
2. "Then I want the music to go back to the beginning."
3. "The musician should then play the first two bars again"
4. "And then jump to the last two bars, which is the **coda**."

"What signs should I use? Can you write them into the score for me?"



In this melody:

1. "I want the music to be played until the beginning of bar 4."
2. "Then I want it to return to be beginning."
3. "After the return, I want the music to jump from the end of bar 2 to the beginning of bar 5."
4. "The last two bars are the **coda**. I think I will need to use the **coda** sign twice. "



In this melody:



1. The **coda** forms the last two bars.
2. When we get to the end of bar 5, we have to return to the beginning of bar 3.
3. Then, when we get to the end of bar 4 on the **repeat**, we have to jump to the **coda**.